



a division of Welch's Transport Ltd

Bringing clean,
zero-emission
pallet deliveries
to **Cambridge**
businesses and
organisations



www.welchsnetzero.com



bringing Net Zero to Greater Cambridge...



What do we mean, 'Net Zero'?

Welch's Net Zero is the ultimate 'last green mile' logistics fulfilment system, providing a superior delivery service to businesses and organisations in Cambridge urbanised areas.

Last-mile delivery is often considered the most expensive and logistically challenging part of the delivery process. It's when goods are transported from a hub or warehouse (Urban Consolidation Centre or UCC) to their final destination. It involves navigating congested urban areas, delivering to individual homes and businesses, and accommodating specific delivery preferences or instructions.

By 'green' we mean: the use of advanced last-mile logistics and multi-modal delivery vehicles to effectively help minimise congestion, carbon emissions, and air and noise pollution in Greater Cambridge.

Our Net Zero vision is to see Greater Cambridge using our 'last green mile' premium delivery model to create a customer-focused, collaborative service that significantly reduces inner-city pollution, congestion, road damage and goods in movements for its clients.

All organisations in the UK will have to meet Net Zero targets by 2050, and the ones who get ahead by investing now in greener systems will benefit both their businesses and our planet when achieving their Net Zero goals.



Cambridge

The problem. The pain. The opportunity.

Urban deliveries are becoming more complex and challenging due to the growth of e-commerce and the increasing demand for faster and more frequent deliveries in urban areas. The volume of urban deliveries is increasing rapidly.

According to a report by McKinsey, delivery volumes in urban areas are expected to increase by 50% by 2030. The UK's e-commerce growth has been significant over the past few years. According to the Office for National Statistics, in 2020, e-commerce sales accounted for 28.5% of all retail sales in the UK, up from 19.1% in 2019.

THIS CREATES A PROBLEM:

As consumers, businesses and organisations order goods at a higher frequency, smaller quantities are then transported to their final destination. This 'last mile' of the supply chain becomes hugely inefficient and costly.

These deliveries exponentially increase the number of goods vehicles on the roads of the city and the requirement for resources/people to accept them.

City congestion is reaching untenable levels, and the contribution to pollution and CO2 emissions has the potential to spiral out of control.

Cambridge County Council has been reporting traffic levels in Cambridge comprehensively since 1978, and in the past decade there has actually been an overall reduction in motorised vehicles entering the city.

The exception to this is the 3% increase seen in Light Goods Vehicle movements, which reinforces the trend in the growth in consumerism and the need for a more robust, green logistical solution.

The report also notes that traffic growth is expected to continue in the future, with estimates suggesting increases of up to 38% by 2031 if no action is taken.

The typical last-mile delivery model has done little to improve matters.

Welch's Net Zero gives Cambridge the opportunity to be first city in the country with a new logistics model driven by urban consolidation and zero emissions vehicles – a brand-new vision for last-mile delivery and green logistics.

About the Welch electric vehicle service...

2023 sees Welch's Transport become one of the first hauliers in the UK to operate a fully electric HGV with this versatile specification:

- 12 pallet spaces
- 18 cage spaces
- 2 tonne tail-lift capacity
- 7.5 tonne load capacity
- 140-mile range
- Solar charging for auxiliaries

We understand the growing importance of sustainability to all businesses and are ready to work with our Greater Cambridge customers to support them with their eco-targets. All organisations in the UK will have to meet Net Zero targets by 2050, and the ones who get ahead by investing now in greener systems will benefit both their businesses and our planet.

The number of cars in Greater Cambridge is increasing. According to a report by Cambridge City Council, the number of registered cars in the city increased from around 70,000 in 2010 to over 80,000 in 2020. This trend is likely to continue, which could exacerbate problems with pollution and congestion.



Welch's Net Zero - not just an electric vehicle!

Our aim is that businesses and organisations in Greater Cambridge are able to quite literally 'share the load' when it comes to reducing CO2 emissions and meeting Net Zero targets.

We're creating an Urban Consolidation Centre (UCC) at our transport depot in Duxford to further support the organisations in Greater Cambridge with clean, emissions-free last-mile deliveries.

At the UCC goods ordered by organisations in Greater Cambridge will be dropped, consolidated, and organised for last-mile delivery with smaller, eco-friendly vehicles. We will implement better vehicle fill, more efficient routing and reductions in last-mile mileage.

This brings a reduction in the number of trucks in the Cambridge urban area and less greenhouse gas emissions:

- The loading factor of delivery vehicles is improved by efficient packing at the UCC
- There is potential for a 46% reduction in the number of vehicle trip deliveries
- A massive 88% decrease in CO2 - EQ emissions per consignment delivered from the UCC using electric vehicles

How does Welch's Net Zero operate?

Welch's Net Zero will develop an innovative freight network, dramatically improving the efficiency and service quality of current Cambridge city logistics.

This network will coordinate urban-appropriate vehicles, starting with one of the first fully battery Electric HGV Vehicles (BEV) in the UK.

At the heart of its operations is the Welch's Net Zero Urban Consolidation Centre (UCC) transport hub comprising full warehousing and logistics management facilities on the edge of Cambridge, just off the A505 by Duxford.

The UCC's 24-hour operation will also allow Welch's Net Zero to deliver goods in and around Cambridge with more flexibility out of hours and at night, aided by the virtual zero running noise of its electric HGVs. That means the ability to avoid peak congestion periods and

work with its partners to collaborate on standardised delivery and collection times.

TOTAL CUSTOMISATION

Keeping Welch's Net Zero in motion will be a customisable freight handling system enabled by a well-trusted IT platform, the base system of which is currently used to manage the Addenbrookes campus' goods in and all Anglian Ruskin sites.

As Welch's Net Zero grows and works collaboratively with its partners, we will

look to launch a customer portal system, the key benefit of which will be an all-in-one tracking, delivery and collection portal for users to get on-demand, real-time updates, and make changes through the process.

Apart from the much-increased capacity for complex decision-making, Welch's Net Zero's logistics software will allow for more accurate routing and ensure that the Net Zero network is able to adapt and integrate with the complex, changing needs of partners.

By splitting the supply chain in this way we'll be able to significantly increase efficiency. The three main advantages will be:

1. Consolidating goods onto a smaller number of full-load Electric Vehicles.
2. Use of an easily accessible location - any time, day or night - with efficient unloading facilities for any leading branded carrier, unlike the typical wastage and inefficiency of today's poor delivery model. (Part-loaded commercial vehicles driving into city centres are one of the major causes of delivery vehicle pollution and congestion.)
3. Utilisation of return journeys by reloading the delivery vehicle with outbound freight - parcel collections, waste, recycling, storage goods for consolidated collection/storage at the UCC. Even greater efficiencies are gained from organisations combining supply chains.



Congestion is a problem in Cambridge. In a 2019 survey by TomTom, the city was ranked as the fifth most congested in the UK, with drivers spending an average of 29% more time in traffic during peak hours.

Welch's Net Zero: future-proofing green logistics

There are numerous ideas in circulation regarding the improvement of last-mile deliveries, including the use of drones, autonomous vehicles and drop-box networks to name but a few. However, the Net Zero system is well-suited to adapt to - or integrate with - many or all of these without substantially altering its core model. Instead, Net Zero can simply modify specific aspects of its service offerings as well as internal operational processes, and become an enabling platform for these technologies.



What is Welch's Net Zero's competitive advantage?

Net Zero is built on Welch's Transport Ltd's 89 years' experience of supply chain management and its successful track record of providing transport solutions in and around Cambridge. But, maybe more importantly, it's a 4th generation, family-run company looking to support Cambridge in its Net Zero journey and helping local businesses and organisations become 'greener'.

It introduces a brand distinct from all other logistics businesses in the local marketplace. In this age of the empowered customer, delivery expectations are high and it will be driven by the requirements of its partners.

The thrust of the Welch's Net Zero end-user/customer experience will centre around ensuring customer confidence and collaboration - something missing from today's faceless and unadaptable supply chain providers. Net Zero will aim to become the 'preferred carrier' for Greater Cambridge, so customers only need to interact with a single carrier to control most, if not all, of their deliveries and collections.

Four stages to Welch's Net Zero vision...

The market sector focus for Welch's Net Zero is groups of organisations and businesses who share geographical locations and who have the appetite to work collaboratively. These include: research and science parks, shopping centres and industrial estates.

To ensure that Welch's Net Zero demonstrates a viable logistical model, shows continuous innovation, and provides real reductions in congestion and CO2 emissions, it will be launched using a four-stage rollout strategy.

This will help us identify leading-edge green delivery solutions that work for our partners well into the future, and gives us the opportunity to identify and rectify potential logistical and technical issues.



STAGE ONE: PROOF OF CONCEPT

This is where we look for partners to have 'round the table' discussions regarding the Welch's Net Zero solution. The aim is to explore together what the partner organisations and businesses feel are the pain points in their own supply chains, and how we can best support their roads to a greener future.

Although we offer a last-mile delivery service, we believe the most cost-effective proof of concept test is to also understand and look at the opportunities for outbound consolidated freight from the outset. This could include waste removal, recycling, outbound consignments/parcels or off-site storage solutions.

By understanding all inbound and outbound movements of potential partners, an end-to-end green supply chain could be implemented, and through shared experience evolve into an industry leading sustainable solution.

STAGE TWO: PILOT OF WIDER AND DEEPER MARKET OPPORTUNITIES

Stage two will include further review of the full breadth of markets and added value services to the Welch's Net Zero offering. Greater Cambridge has a unique ecosystem, covering commercial spaces, retail districts and world-leading research, medical and science campuses.

Different areas of Cambridge will need different solutions; retail may be more suitably serviced at night, medical campuses need time-specific deliveries and research parks require a solution for the movement of dry ice.

Further studies will be undertaken, for instance, when reviewing the retail areas of Cambridge we would first look at the known areas of concern.

Congestion in the City Centre often means delayed deliveries of stock, leading to potential lower sales. Net Zero will help solve delivery problems for Cambridge retailers, whilst simultaneously supporting their objective to reduce pollution and congestion. This will lay the foundation for potential strategic partnering.

Within the retail space, Net Zero would identify the added value services and could focus initially on four target audiences:

1. Those who frequently send out items (Net Zero's outbound collections service).
2. Businesses with restricted space in stores (Net Zero's stock storage service).
3. Retailers with steady stock requirements (Net Zero's JIT 'Just In Time' delivery service).
4. Those needing regular deliveries from multiple wholesalers (the Net Zero consolidation service).

Most solutions would be applicable to all segments of Cambridge. Net Zero's focus will be on service quality and cost efficiency in its operation, and a robust customer experience.

STAGE THREE: MOVE TO IMPLEMENTATION & GROWTH

By Stage Three, working case studies should be starting to be successfully trialed or in full operation. The next wave of Battery Electric Vehicles will be being designed along-side strategic growth partners, specifically built to their requirements.

The commercials behind Welch's Net Zero and the UCC will be fully realised and evidenced. Running costs of the first generation of EV Heavy Goods Vehicles will be tracked and understood, achieving a 'pence per mile' (PPM) figure. The UCC will be able to demonstrate its volume capabilities, understand processing timeframes and start to build relationships with the organisations delivering freight in, with the aim for standardised, regular movements from the high volume inputters, such as the parcel carriers.

Supplementary services such as parcel lockers can easily be added to the Net Zero network to facilitate a broader service offering for strategic locations, such as research campuses and multi-tenanted commercial offices. All this could be managed and transmitted through the Net Zero management and tracking platform.

These growth projects bring with them additional benefits, such as the ability to have these assets designed, branded and liveried in line with the operating organisation's vision, colours and logos.

Finally, with partner and client engagement, the Net Zero IT platform will be developed to provide a customer-focused dashboard and portal, ensuring that customer service and satisfaction are as important as the environmental goals.



The average speed of traffic in Cambridge is decreasing. According to a report by the Department for Transport, the average speed of traffic on urban A-roads in Cambridge decreased from 17.8 miles per hour in 2010 to 14.3 miles per hour in 2019.



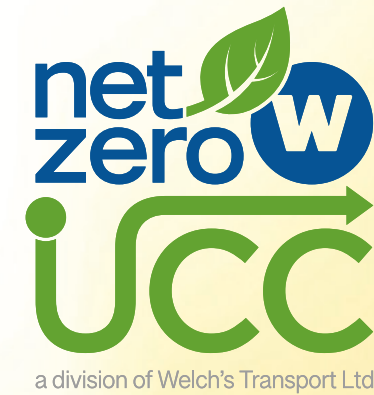
STAGE FOUR: THE NET ZERO UTOPIAN VISION

At the end of Stage Three, Welch's Net Zero will have a proven product and scalable business model. It is expected that suppliers and partners that make use of the Net Zero consolidated network will realise some cost savings due to the growth, increases in volume and efficiency savings.

It is hoped that the UCC and its green last-mile solution becomes the standard for deliveries entering the city and freight exiting as well. That all businesses and organisations in Greater Cambridge utilise the service and, as the city continues to grow, this model is taken into consideration at the planning stage to make a cleaner, quieter and greener environment for all.



Welch's Net Zero Urban Consolidation Centre (UCC)



We're building a Net Zero Urban Consolidation Centre (UCC) at our transport depot in Duxford to further support the organisations in Greater Cambridge with clean, emissions-free last-mile deliveries.

This brings a number of clear benefits:

REDUCED TRAFFIC CONGESTION:

UCCs help reduce traffic congestion in urban areas by consolidating goods from multiple suppliers into a single vehicle for delivery. This reduces the number of delivery trucks on the road and reduces traffic congestion. According to a study by Transport for London, UCCs have the potential to reduce the number of delivery vehicles in London by up to 90%.

LOWER EMISSIONS:

UCCs help reduce greenhouse gas emissions by consolidating deliveries and using more efficient vehicles for last-mile delivery. According to a report by the UK government, UCCs can reduce CO2 emissions by up to 50% compared to traditional delivery methods.

IMPROVED EFFICIENCY:

UCCs help improve the efficiency of last-mile delivery by reducing the number of trips required to deliver goods. According to a study by the European Commission, UCCs can reduce delivery costs by up to 50% compared to traditional delivery methods.

INCREASED CUSTOMER SATISFACTION:

UCCs can improve customer satisfaction by reducing the number of delivery trucks on the road, reducing traffic congestion, and improving the reliability of deliveries. According to a study by the University of Westminster, UCCs can increase delivery success rates by up to 99%.

SOURCES:

- Transport for London. (2014). Urban Consolidation Centres. Retrieved from <https://tfl.gov.uk/info-for/urban-freight/urban-consolidation-centres>
- UK Government. (2017). Last mile logistics: Vision for urban freight. Retrieved from <https://www.gov.uk/government/publications/last-mile-logistics-vision-for-urban-freight>
- European Commission. (2013). Urban Freight Transport. Retrieved from https://ec.europa.eu/transport/themes/urban/studies/doc/2013_urban_freight_transport.pdf
- University of Westminster. (2015). Urban Consolidation Centres: A Practical Guide for Transport Planners. Retrieved from https://www.westminster.ac.uk/_data/assets/pdf_file/0004/314540/UCC-Guidance-Doc-2nd-Edn-Nov-2015.pdf

Why Cambridge needs Net Zero

Greater Cambridge is home to several world-renowned universities and research institutions, and has a reputation as a hub for business innovation and technology.

By introducing a green last-mile delivery solution, the city can showcase its commitment to sustainability and demonstrate its leadership in developing innovative solutions to environmental challenges. This can attract investment, talent and contribute to a positive image of the city as a progressive and forward-thinking place to live and work.

But the change in last-mile delivery services has not kept up with the progress demanded. With the growth of services such as Amazon Business Prime, Uber Eats and 'Just In Time', Greater Cambridge is becoming plagued with half-loaded vans leading to an increase in pollution levels. In fact, pollution from last-mile delivery vehicles has become an increasingly urgent issue in urban areas across the UK.

To address this issue, we're introducing Welch's Net Zero as a solution that promises to revolutionise last-mile delivery operations. Net Zero is an approach to logistics management that seeks to minimise the environmental impact of delivery vehicles by reducing their GHG emissions to zero. This is achieved through a combination of technologies such as electric vehicles, advanced customer engagement and route optimisation, that enables more efficient and sustainable delivery routes - cemented at its heart by Cambridge's first Urban Consolidation Centre (UCC).

In addition to reducing pollution and noise, Net Zero can help to reduce delivery costs by improving route efficiency through handling outbound movements such as waste, recycling, parcel dispatch and storage at the UCC, as part of the journey.

Overall, the introduction of Net Zero is expected to be a significant step forward in the effort to reduce the environmental impact of last-mile delivery operations in Greater Cambridge. It represents an opportunity to create a more sustainable and efficient system that meets the needs of both organisations and the environment.



Public transport use in Cambridge is relatively low. According to a report by the Cambridgeshire and Peterborough Combined Authority, only 17% of journeys in the city are made by public transport, compared to 59% by car and 18% by walking or cycling.

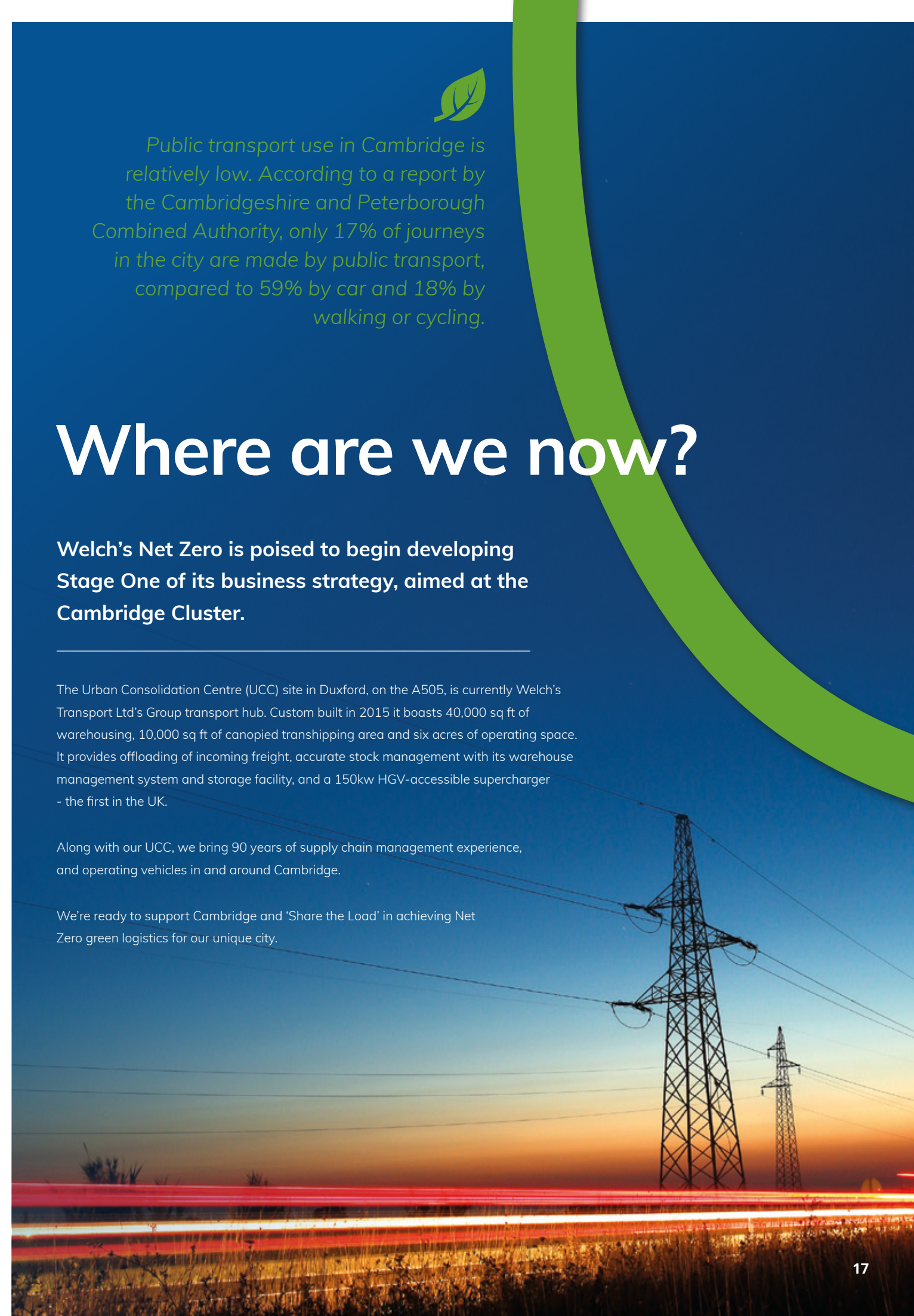
Where are we now?

Welch's Net Zero is poised to begin developing Stage One of its business strategy, aimed at the Cambridge Cluster.

The Urban Consolidation Centre (UCC) site in Duxford, on the A505, is currently Welch's Transport Ltd's Group transport hub. Custom built in 2015 it boasts 40,000 sq ft of warehousing, 10,000 sq ft of canopied transhipping area and six acres of operating space. It provides offloading of incoming freight, accurate stock management with its warehouse management system and storage facility, and a 150kw HGV-accessible supercharger - the first in the UK.

Along with our UCC, we bring 90 years of supply chain management experience, and operating vehicles in and around Cambridge.

We're ready to support Cambridge and 'Share the Load' in achieving Net Zero green logistics for our unique city.



Who are Welch's Transport?

Welch's Transport is a trusted local business with 90 years' experience serving customers across the UK with reliable and efficient logistics and pallet delivery solutions.



We began as a humble operation founded by Gordon Welch. With a single Morris truck, he recognised that in order to establish a thriving business, he needed to offer more than just a mode of transportation to the people of Cambridge. Gordon's vision for the company centred on providing honest value for money by delivering superior service and treating each customer as a unique individual with specific needs.



This approach allowed customers to feel like an integral part of the Welch's family, which ultimately paved the way for the company's success and why it's now into its 4th generation.

Keeping our customers happy has been at the heart of our business as long as Welch's Transport has been on the road.

We understand the growing importance of sustainability to all businesses and are ready to work with our Greater Cambridge customers to support them with their eco-targets.



Welch's Transport have been one of the leading haulage companies in the East of England for almost 90 years, specialising in a range of transport solutions from general haulage and pallet delivery to the transportation of dangerous goods and abnormal loads.



OUR VALUES

The values that drive our business and how Net Zero will be operated:

THINK CREATIVELY

As a company that's been in operation for more than eight decades, the transportation industry has undergone significant changes over the years. However, Welch's Transport Ltd has managed to remain relevant and competitive by embracing a culture of innovation and creativity.

We continually evaluate and assess our operations to ensure we're providing the most efficient and effective solutions to our customers - one of the main reasons for the creation of its Net Zero service offering.

STAND FOR SIMPLICITY

We recognise that in the transportation industry, it's easy to overcomplicate things. However, we know that simplicity is often the key to success, and we've implemented a number of initiatives to ensure our operations remain as simple and streamlined as possible.

MEASURE UP

It's essential to measure up against the best in the business. We're committed to providing our customers with the highest level of service possible, and continually evaluate and assess our operations to ensure we meet and exceed industry standards.

GIVE VALUE

Welch's Transport Ltd embrace the importance of delivering freight on time, every time. We understand our customers rely on their shipments arriving on schedule, and have therefore implemented a number of measures to ensure that we consistently deliver on our promise.



The team behind Net Zero...

Our team is here to support you with information and logistics expertise to help your organisation make the move to a green logistics solution.



Chris Welch

Captain Planet

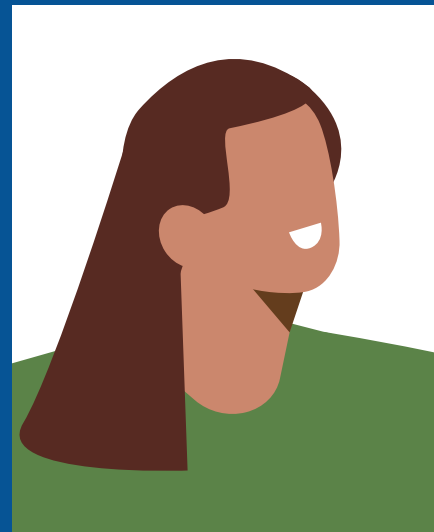
Meet Chris, the Sustainability Superhero! With a passion for protecting the planet and years of experience in sustainable business practices, Chris is the driving force behind our mission to create a more eco-friendly future. His superpower? Vision! Chris knows how to develop and implement sustainable strategies that benefit both the environment and the bottom line. When he's not leading our team, you can find Chris playing with his kids, or exploring the latest innovations in renewable energy. We're lucky to have Chris at the helm, and he's ready to help you build a sustainable business that makes a positive impact on the world!



Sacha Wilks

Commercial Application

Meet Sacha, the Sales Samurai! With his razor-sharp wit and unbeatable charm, Sacha is our top-notch salesman extraordinaire. He's always on the go, wheeling and dealing with clients, and closing deals left and right. His secret weapon? Persuasion! Sacha knows how to read people like a book and tailor his pitch to their needs. When he's not on the phone or out on the road, you can find Sacha cheering on his favourite football team, trying out new craft beers, or exploring the British countryside. It's great to have Sacha working with us, he's ready to help you take your business to the next level!



Jamie Sands

Technology & Data

Meet Jamie, the Tech Titan! With his expert knowledge of all things tech and data, Jamie is the driving force behind our cutting-edge technology and analytics initiatives. His superpower? Innovation! Jamie knows how to leverage the latest technology and data tools to drive business success and stay ahead of the curve. When he's not digging into data or tinkering with software, you can find Jamie helping to look after his many pets, watching movies, or whipping up cocktails in his home bar. Jamie is a valuable member of our team, and he's ready to help you unlock the full potential of your technology and data assets!



Hayley Francis

Customer Relations

Meet Hayley, the Customer Service Champion! With her unparalleled empathy and razor-sharp communication skills, Hayley is the driving force behind our top-notch customer service team. Her superpower? Compassion! Hayley knows how to put herself in the customer's shoes and make sure they feel understood. When she's not answering customer calls, you can find Hayley sunning herself on the beach, partying with her pals, or helping out at her local. It's a privilege to work alongside someone as talented as Hayley, she's ready to help you create a customer experience that will keep them coming back for more!



Sophie Home

UCC Operations

Meet Sophie, the Warehouse Whiz! With years of experience under her belt, Sophie is the mastermind behind the efficient operation of our bustling warehouse. Her superpower? Organisation! Sophie knows how to keep everything in its place and make sure orders are processed and shipped out on time. When she's not in the warehouse, you can find Sophie hiking in the great outdoors, running marathons, or playing with her puppy Merlin. Sophie brings a lot of expertise to our team and we're glad to have her on board!



A message from Captain Planet...

(better known as Chris Welch)

“The arrival of our new electric HGV, combined with the installation of our new super charger, has brought our vision for a greener future to life. It represents our commitment to assisting the industry, Greater Cambridge and its businesses in achieving their Net Zero goals.”

“Transport and logistics companies need to consider vehicle range and available charging infrastructure when planning the integration of EV into their fleets. But we are ideally located to integrate fully electric vehicles into our fleet already, thanks to our prime located depot in Duxford.

Whilst vehicle range from alternative vehicle power sources increase, the start of our net zero journey will be focusing on delivering cleaner last-mile deliveries into Cambridge through Urban Consolidation, and our 90 years of servicing the local area provides us with an unrivalled launch pad. But we cannot do this alone, we need the collaboration of local businesses and organisations to want to join us on this journey by 'sharing the load'.”

Chris Welch
Commercial & Operations Director



The power of collaboration is that we can achieve things that we couldn't do alone.

As we embark on this journey, we recognise that it is not a task that can be achieved by a single person or group alone.

We are taking a collaborative approach to ensure that we can draw upon the diverse expertise and experience of multiple sectors, including our own supply chain expertise. By working with partners from other sectors, we can pool our resources and leverage our collective strengths to develop more effective strategies, tackle complex challenges, and achieve our shared goals.

By doing so, we can gain a deeper understanding of the complexities and challenges involved in the supply chain and identify opportunities for improvement and innovation. Through this collaborative effort, we can develop strategies and solutions that are tailored to our specific needs and that consider a wide range of factors, such as cost, risk, and sustainability. We believe that this approach not only benefits us and our partners, but also contributes to the broader goal of creating a more resilient, reliable, and sustainable supply chain for all.

OPTIMIZE BY THE ALGORITHM PEOPLE

Optimise Decarbonise Transform
Planning and route optimisation will be powered by the Algorithm People. Optimize uses powerful artificial intelligence proven to reduce costs, increase productivity and cut emissions. Integration trials on Welch's current fleet have shown efficiency savings of up to 20%. This saving not only allows us faster transition to battery electric vehicles but because the planning and optimisation process is completed in minutes, it allows for adaptive and up-to-the-minute routing.

Learn more at www.thealgorithmpeople.co.uk

THE ENERGY SAVING TRUST

Future proofing the UCC's electrification program and understanding the capacities of the current site is essential. In November 2022 Welch's Transport Ltd undertook a full site and fleet review completed by the Energy Saving Trust at their Duxford operation, the home of the new UCC. Built in 2017 the site already boasts a solar panel array and its own substation to the grid. Alongside these measurements, data was provided for the current HGV fleet, its telematics and usage to track a pathway and potential power consumption on the road to a fully Electric Fleet. This review is available upon request.

See what the EST do at www.energysavingtrust.org.uk

CAMBRIDGE NETWORK

“Alone we can do so little; together we can do so much.”

To ensure it remains relevant and current, Welch's Transport Ltd are members of Cambridge Network, Cambridge Cleantech and Cambridgeshire Chambers of Commerce to talk to the myriad of stakeholders of the city. It is vital that Net Zero continues to showcase its commitment to sustainability and demonstrates its leadership in developing solutions to the environmental and supply chain challenges facing Greater Cambridge.

If you're interested in joining these networks please visit:

www.cambridgenetwork.co.uk

www.cambridgeshirechamber.co.uk

www.cambridgecleantech.org.uk

VEHICLE MANUFACTURERS

The big win for urban consolidation comes when you then add in the use of Electric Vehicles, specifically BEV HGV (Battery Electric Vehicle), as it allows for greater carrying capacity. One 19t HGV rigid can take 6 fully laden Electric 3.5t vans off the road. Welch's are currently Renault Truck partners so have access to the latest vehicle models and technology, but this is a journey and we have also engaged with new manufacturers on the scene such as Tevva and Volta Trucks for solutions to different vehicle applications which could include, smaller weigh classes, lighter or even refrigerated loads.

www.renault.co.uk

www.voltatrucks.com





a division of Welch's Transport Ltd

www.welchsnetzero.com



www.vdmagency.co.uk